

Zelig S

design Paolo Vernier, 2009

Stackable chair with four leg base in chrome or lacquered steel. Shell available upholstered in leather, ecoleather, fabric or custom's fabric.



Finishing and Materials

Structure



White Steel



Chrome

Coating



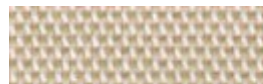
Long Life Fabric
13 colors



Mirage Fabric
17 colors



Fenix Wool Fabric
15 colors



Pix Fabric
9 colors



Bubble Fabric
14 colors



Hot Fabric
14 colors



Velvet Superb
18 colors



Secret Ecoleather
22 colors



Vintage Ecoleather
11 colors



Vintage Leather
4 colors



Fiore Leather
18 colors

Dimensions



Dimension	cm	inch
A	82	32.3

Dimension	cm	inch
B	46	18.1
C	57	22.4
D	46	18.1

Volumetric Details

Weight 6.5

Volume 0.32 mc

Package 1

Stackable 4 pieces

Materials Certifications

Long Life Fabric

Martindale 40.000 cycles Composition: 74% Polyester, 18% Cotton, 8% Acrylic Shrinking about 1%

Mirage Fabric

Martindale: 100.000 cycles Composition: 100% Polyester Shrinking about 1% Fire retardant fabric: classe 1IM, B1 DIN 4102, M1, B1 OENORM Part.1, BS 5852 Crib 5, EN 1021, USA Calif. Bull 117, IMO 688 (17) - IMO 563 (14) - IMO 653 (16)

Fenix Wool Fabric

Martindale: 100.000 cycles Composition: 70% Wool, 25% Polyamid, 5% Fibers Shrinking about: 1% Fire retardant fabric: BS 5852 part. 1, Cigaret test, Match test

Bubble Fabric

Martindale: 35.000 cycles Composition: 100% Pes Fire retardant fabric: BS5852:2006 (p. 11 CRIB 5), EN1021-1, EN1021-2, UNI 9175:2010 - classe 1 im

Hot Fabric

Martindale: 45.000 cycles Composition: 100% Pes Fire retardant fabric: BS5852:2006 (p. 11 CRIB 5), EN1021-1, EN1021-2, UNI 9175:2010 - classe 1 im

Secret Ecoleather

Martindale: 150.000 cycles Composition: 31% Cotton, 48% Polyurethane, 21% Polyester Shrinking about: 1% Fire retardant ecoleather: Classe 1IM, BS 5852 Part. 1, Cigaret Test, Match Test

Vintage Ecoleather

Ecoleather phtalatic free - R.E.A.C.H. 1907/2006/EU Breathable ecoleather Composition: 90% PVC, 7% Polyurethane, 3% Cotton Shrinking about 1%

Vintage Leather

UNI EN ISO 105 B02 ?3; ISO 5402>50000 cicli; ISO 3377-1?20; UNI EN ISO 11640 Secco - Dry 50 c ?4 Umido - Wet 20 c ? 3; Sudore - Sweat 20 c ? 3

Fiore Leather

BS 5852 parte 1; ISO 5402>50000 cicli; ISO 105B02 ? 5; ISO 3377-1 ?20 N; ISO 11644 ? 2.5 N/Cm; EN 1021/1-2; EN ISO 17233 -20°; IMO RES A 6528(16)