

Clessidra Table

design Paolo Vernier

Fixed round table with solid or two-colored steel base. Wooden version available. Crystalceramic or wooden top.



Colors and Materials

Structure



White Steel



Sand Steel



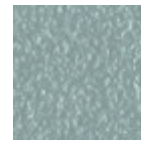
Grafite Steel



Brown Steel



Black Seel



Light blue steel

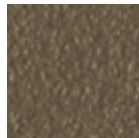
1 color



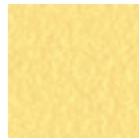
Ocean Blue Steel



Bronze Steel



Fango Steel



Pastel Yellow Steel



Ocher Steel



Facepowder Pink Steel

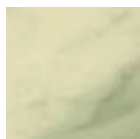


Red steel



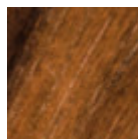
Sage Green Steel

Coating

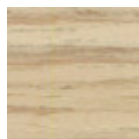


Ceramic with effect calacatta marble

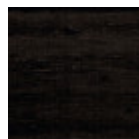
1 color



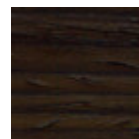
Veneered Flamed Walnut



Veneered wood light oak

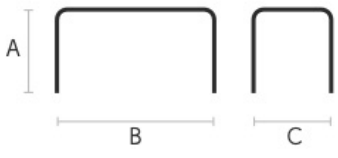


Black Lacquered Veneered Wood



Veneered Wood Dark Oak

Dimensions



	cm	inch
A	76	29.9
B	150	59.1
C	150	59.1