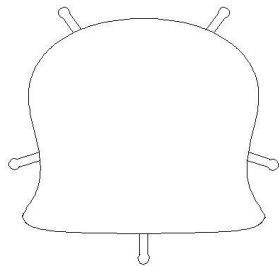
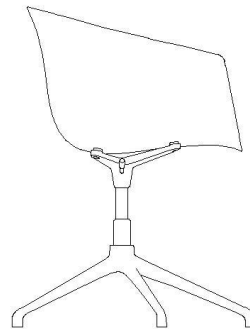
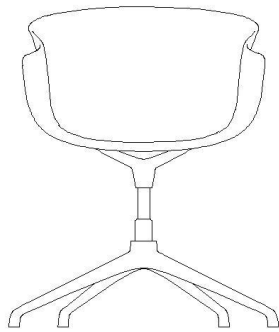


# TECHNICAL CHARACTERISTICS BAI SWIVEL CHAIR





#### DIMENSIONS

64 cm x 61 cm x 78 cm x 45 cm (25,2" x 24" x 30,7" x 17,7") [width x depth x height x seat height]

#### WEIGHT

8,2 kg (18,08 lb)

#### PACKAGING

One chair per box, box dimensions: 62,5 cm x 58 cm x 99,5 cm (24,6" x 22,8" x 39,2")

#### CERTIFICATION

Product tested under the European standard EN 16139, category of general use L2.

#### ACCESORIES

Option felt glides

Option castors

Cushion

#### ORIGIN

100% Made in Europe

#### DESIGN

Ander Lizaso

## 1. COMPONENTS

### 1.1. FRAME

#### MATERIAL

Cast aluminum base of varying thickness.

#### FINISH

Black and silk

### 1.2. SEAT & BACK

#### TEXTURED POLYPROPYLENE

Textured matt copolymer. Very good mechanical properties, light and UV ray resistant.

#### FINISH

Textured matt, fabric or fabric seat.

## 2. METAL FINISHES

### 2.1. EPOXYS

Powder covering formulated with polyester resins, with good both mechanical and chemical properties, outdoor maximum resistance and noxious compounds free. Electrostatic application and oven cured at 200°C (392°F).

#### Technical Characteristics:

Thickness (ISO 2360): between 60 and 90 µm.

Adherence (ISO 2409): Grade: 0 (maximum adherence)

## 3. FABRICS

#### TYPE A: ACUA by Mercader

"Acua" fabric from the "Aqualis Collection" by Mercader.

Fabric made up of vinyl on a polyester base.

Nanotech protective treatment that provides a barrier against liquids, oils and solids, making it easier to clean.

#### TYPE A: VALENCIA by Spradling

Fabric made of vinyl on a "ultra HiLoft" polyester base.

Silverguard® treatment combined with the Permablok® finish gives highly effective protection against all types of germs; anti-bacterial, non-staining and anti-abrasion.

#### TYPE B: DIAMANTE by Spradling

Fabric made of vinyl on an "ultra HiLoft" polyester base.

Silverguard® treatment combined with the Permablok® finish gives highly effective protection against all types of germs; anti-bacterial, nonstaining and anti-abrasion.

#### TYPE B: HITCH by Spradling

Fabric made of vinyl on an "ultra HiLoft" polyester base.

Silverguard® treatment combined with the Permablok® finish gives highly effective protection against all types of germs; anti-bacterial, nonstaining and anti-abrasion.

TYPE B: URBAN by Camira

100% recycled polyester fabric with non-metallic dyes.

It has the EU Eco-label stamp which acknowledges products that meet the strictest requirements of environmental quality and manufacture.

TYPE B: GO by Gabriel

Fabric 100% made up of Trevira CS fibres. This material is fire-proof, resistant and environmentally friendly and it is suitable for environments with special requirements for cleaning.

It holds the OEKO-TEX stamp that guarantees the absence of harmful chemical substances in the manufacturing process.

TYPE C: STEP and STEP MELANGE by Gabriel

Fabric 100% made up of Trevira CS fibres. This material is fire-proof, resistant and environmentally friendly.

It holds the OEKO-TEX stamp that guarantees the absence of harmful chemical substances in the manufacturing process.

TYPE C: REVIVE 1 by Kvadrat

Fabric designed by Georgina White, made up of 100% recycled polyester FR.

Revive 1 is made from post-consumer recycled polyester PET (plastic bottles) and is especially created with a focus to reduce the environmental impact both in production and natural resources.

TYPE D: GRAVEL by Kvadrat

Fabric designed by Ronan&Erwan Bouroullec, made up of 68% polyester, 14% polyester FR and 18% virgin wool.

Designed to introduce a new understanding of textile material, constructed using a double jersey knit.

It meets REACH regulation requirements. Dyes containing heavy metals are not used, according to the ETAD standard.

TYPE D: STEELCUT TRIO2 by Kvadrat

Fabric designed by Frans Dijkmeijer and Giulio Ridolfo, made of 90% combed virgin wool and 10% nylon.

Steelcut Trio 2 features an innovative weave, which gives the fabric a three-dimensional surface resembling small pyramids or steel points and, despite the complexity of the weave, a simple and precise expression.

TYPE L: 900 FUSION by Antic Cuir

European cow leather. Smooth natural grain, soft and warm touch.

It fulfills the requirements of REACH regulation whose main objective is to improve the protection for human health and the environment against the risk that can be caused by the manufacture, commercialization and use of chemical substances and mixtures.

REQUIREMENT

Full fabric: 125 cm (49,2") width/unit.

Fabric seat: 53 cm (20,9") width/unit.

Combi: 80 cm (31,5") width/unit.

Cushion: 50 cm (19,7) width/unit.

#### 4. COLOUR SAMPLES

##### 4.1. FRAME

##### 4.1.1. EPOXYS



##### 4.2. SEAT & BACK

##### 4.2.1. TEXTURED POLYPROPYLENE

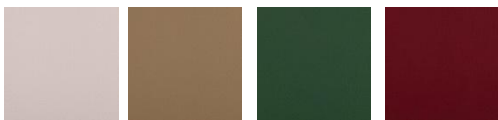


##### 4.2.2. FABRICS

##### TYPE A: ACUA by Mercader



##### TYPE A: VALENCIA by Spradling



##### TYPE B: DIAMANTE by Spradling



TYPE B: HITCH by Spradling



TYPE B: URBAN by Camira



TYPE B: GO by Gabriel



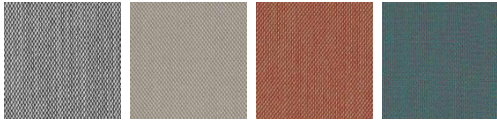
TYPE C: STEP/STEP MELANGE by Gabriel



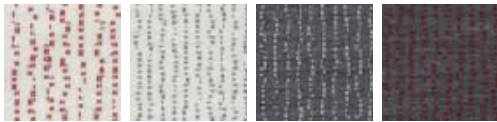
TYPE C: REVIVE 1 by Kvadrat



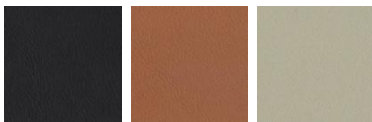
TYPE D: STEELCUT TRIO 2 by Kvadrat



TYPE D: GRAVEL by Kvadrat



TYPE L: SERIE 900 by Antic Cuir





5. PHOTOS





