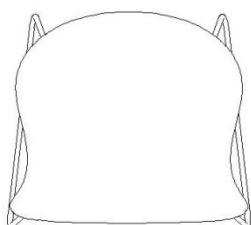




TECHNICAL CHARACTERISTICS BAI SLED CHAIR





DIMENSIONS

59,5 cm x 54 cm x 78 cm x 45 cm (23,4" x 21,3" x 30,7" x 17,7") [width x depth x height x seat height]

WEIGHT

8 kg (17,64 lb)

PACKAGING

One chair per box, box dimensions: 62,5 cm x 58 cm x 99,5 cm (24,6" x 22,8" x 39,2")

CERTIFICATION

Product tested under the European standard EN 16139, category of general use L2.

ACCESORIES

Option felt glides

Cushion

OPTION

Outdoor

ORIGIN

100% Made in Europe

DESIGN

Ander Lizaso



1. COMPONENTS

1.1. FRAME

MATERIAL

12 mm (0.5") diameter cold laminated E-220 quality (EN-10305 Normative) steel rod.

Tensile Strength > 310 N/mm² (44,960 psi);

Elastic Limit > 220 N/mm² (31,900 psi); Elongation > 23%

FINISH

Colour Epoxy

1.2. SEAT & BACK

Impact textured copolymer to obtain matt finish. It has good mechanical properties. Very light and resistant to UV rays.

Check for fireproofing.

Density (s / ISO 1183): 900 kg / m³

Yield stress (s / ISO 527-1 / -2): 23 N / mm²

Flexural modulus (s / ISO 178): 1100 N / mm² (23 ° C)

FINISH

Textured matt, fabric or upholstered seat

2. METAL FINISHES

2.1. EPOXYS

Powder covering formulated with polyester resins, with good both mechanical and chemical properties, outdoor maximum resistance and noxious compounds free. Electrostatic application and oven curated at 200°C (392°F).

Technical Characteristics:

Thickness (ISO 2360): between 60 and 90 µm.

Adherence (ISO 2409): Grade: 0 (maximum adherence)

3. FABRICS

TYPE A: ACUA by Mercader

"Acua" fabric from the "Aqualis Collection" by Mercader.

Fabric made up of vinyl on a polyester base.

Nanotech protective treatment that provides a barrier against liquids, oils and solids, making it easier to clean.

TYPE A: VALENCIA by Spradling

Fabric made of vinyl on an "ultra HiLoft" polyester base.

Silverguard® treatment combined with the Permablok® finish gives highly effective protection against all types of germs; anti-bacterial, non-staining and anti-abrasion.



TYPE B: DIAMANTE by Spradling

Fabric made of vinyl on an “ultra HiLoft” polyester base.

Silverguard® treatment combined with the Permablok® finish gives highly effective protection against all types of germs; anti-bacterial, nonstaining and anti-abrasion.

TYPE B: HITCH by Spradling

Fabric made of vinyl on an “ultra HiLoft” polyester base.

Silverguard® treatment combined with the Permablok® finish gives highly effective protection against all types of germs; anti-bacterial, nonstaining and anti-abrasion.

TYPE B: URBAN by Camira

100% recycled polyester fabric with non-metallic dyes.

It has the EU Eco-label stamp which acknowledges products that meet the strictest requirements of environmental quality and manufacture.

TYPE B: GO by Gabriel

Fabric 100% made up of Trevira CS fibres. This material is fire-proof, resistant and environmentally friendly and it is suitable for environments with special requirements for cleaning.

It holds the OEKO-TEX stamp that guarantees the absence of harmful chemical substances in the manufacturing process.

TYPE C: STEP and STEP MELANGE by Gabriel

Fabric 100% made up of Trevira CS fibres. This material is fire-proof, resistant and environmentally friendly.

It holds the OEKO-TEX stamp that guarantees the absence of harmful chemical substances in the manufacturing process.

TYPE D: GRAVEL by Kvadrat

Fabric designed by Ronan&Erwan Bouroullec, made up of 68% polyester, 14% polyester FR and 18% virgin wool.

Designed to introduce a new understanding of textile material, constructed using a double jersey knit.

It meets REACH regulation requirements. Dyes containing heavy metals are not used, according to the ETAD standard.

TYPE D: STEELCUT TRIO2 by Kvadrat

Fabric designed by Frans Dijkmeijer and Giulio Ridolfo, made of 90% combed virgin wool and 10% nylon.

Steelcut Trio 2 features an innovative weave, which gives the fabric a three-dimensional surface resembling small pyramids or steel points and, despite the complexity of the weave, a simple and precise expression.

TYPE L: 900 FUSION by Antic Cuir

European cow leather. Smooth natural grain, soft and warm touch.

It fulfills the requirements of REACH regulation whose main objective is to improve the protection for human health and the environment against the risk that can be caused by the manufacture, commercialization and use of chemical substances and mixtures.

REQUIREMENT

Full fabric: 125 cm (49,2”) width/unit.

Fabric seat: 53 cm (20,9”) width/unit.

Combi: 80 cm (31,5”) width/unit.

Cushion: 50 cm (19,7”) width/unit.

4. COLOUR SAMPLES

4.1. FRAME

4.1.1. EPOXYS



4.2. SEAT & BACK

4.2.1. TEXTURED POLIPROPYLENE



4.2.2. FABRICS

TYPE A: ACUA by Mercader



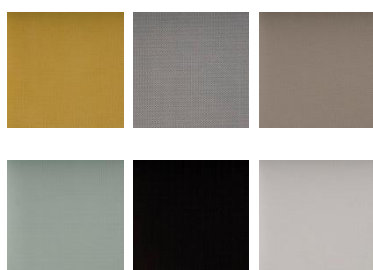
TYPE A: VALENCIA by Spradling



TYPE B: DIAMANTE by Spradling



TYPE B: HITCH by Spradling



TYPE B: URBAN by Camira



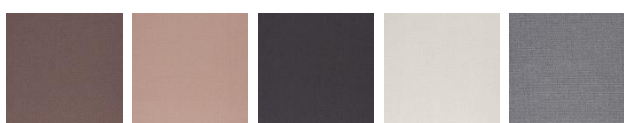
TYPE B: GO by Gabriel



TYPE C: STEP/STEP MELANGE by Gabriel



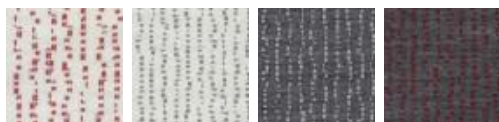
TYPE C: REVIVE 1 by Kvadrat



TYPE D: STEELCUT TRIO 2 by Kvadrat



TYPE D: GRAVEL by Kvadrat



TYPE L: SERIE 900 by Antic Cuir



5. PHOTOS



