



# Nuvola SA

design Midj R&D

Chair with four legs completely upholstered with hide, regenerated hide, leather, ecoleather, fabric or custom's fabric. Available with white or graphite lacquered legs and for the leather, ecoleather and fabric version possibility to upholster the back face with a different fabric.



## Finishing and Materials

### Structure



White Steel



Grafite Steel

### Coating



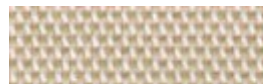
Mirage Fabric  
17 colors



Long Life Fabric  
13 colors



Fenix Wool Fabric  
15 colors



Pix Fabric  
9 colors



Bubble Fabric  
14 colors



Hot Fabric  
14 colors



Secret Ecoleather  
22 colors



Vintage Ecoleather  
11 colors



Fiore Leather  
18 colors



Vintage Leather  
4 colors



Rigenerated Hide  
10 colors



Hide  
20 colors

## Dimensions



Dimension	cm	inch
A	96	37.8

Dimension	cm	inch
B	44	17.3
C	55	21.7
D	47	18.5

---

## Volumetric Details

**Weight** 15.5

**Volume** 0.26 mc

**Package** 1

**Stackable** 4 pieces

---

## Downloads

[Nuvola brochure \(pdf\)](http://www.midj.com/images/uploads/resources/nuvola.pdf) - <http://www.midj.com/images/uploads/resources/nuvola.pdf>

---

## Materials Certifications

### Mirage Fabric

Martindale: 100.000 cycles Composition: 100% Polyester Shrinking about 1% Fire retardant fabric: classe 1IM, B1 DIN 4102, M1, B1 OENORM Part.1, BS 5852 Crib 5, EN 1021, USA Calif. Bull 117, IMO 688 (17) - IMO 563 (14) - IMO 653 (16)

### Long Life Fabric

Martindale 40.000 cycles Composition: 74% Polyester, 18% Cotton, 8% Acrylic Shrinking about 1%

### Fenix Wool Fabric

Martindale: 100.000 cycles Composition: 70% Wool, 25% Polyamid, 5% Fibers Shrinking about: 1% Fire retardant fabric: BS 5852 part. 1, Cigaret test, Match test

### Bubble Fabric

Martindale: 35.000 cycles Composition: 100% Pes Fire retardant fabric: BS5852:2006 (p. 11 CRIB 5), EN1021-1, EN1021-2, UNI 9175:2010 - classe 1 im

### Hot Fabric

Martindale: 45.000 cycles Composition: 100% Pes Fire retardant fabric: BS5852:2006 (p. 11 CRIB 5), EN1021-1, EN1021-2, UNI 9175:2010 - classe 1 im

### Secret Ecoleather

Martindale: 150.000 cycles Composition: 31% Cotton, 48% Polyurethane, 21% Polyester Shrinking about: 1% Fire retardant ecoleather: Classe 1IM, BS 5852 Part. 1, Cigaret Test, Match Test

### Vintage Ecoleather

Ecoleather phtalatic free - R.E.A.C.H. 1907/2006/EU Breathable ecoleather Composition: 90% PVC, 7% Polyurethane, 3% Cotton Shrinking about 1%

### Fiore Leather

BS 5852 parte 1; ISO 5402>50000 cicli; ISO 105B02 ? 5; ISO 3377-1 ?20 N; ISO 11644 ? 2.5 N/Cm; EN 1021/1-2; EN ISO 17233 -20°; IMO RES A 6528(16)

### Vintage Leather

UNI EN ISO 105 B02 ?3; ISO 5402>50000 cicli; ISO 3377-1?20; UNI EN ISO 11640 Secco - Dry 50 c ?4 Umido - Wet 20 c ? 3; Sudore - Sweat 20 c ? 3