

# Pippi H65 / H75 Stool

design Roberto Paoli, 2019

Stool with four-leg base upholstered in fabric. Steel feet.



## Colors and Materials

### Structure



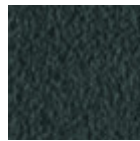
White Steel



Sand Steel



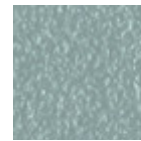
Pastel Yellow Steel



Grafite Steel



Black Steel



Light blue steel

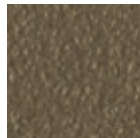
1 color



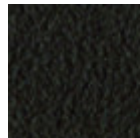
Ocean Blue Steel



Bronze Steel



Fango Steel



Brown Steel



Light Grey Steel



Ocher Steel



Facepowder Pink  
Steel



Red steel



Sage Green Steel

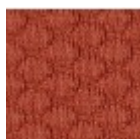


Pink Gold



Black Nickel

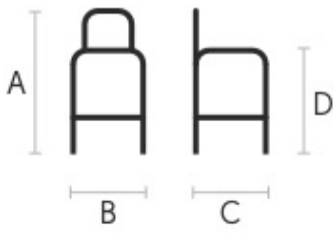
### Coating



Visual Fabric

11 Colors

## Dimensions



## Volumetric Details

**Weight** 9 Kg

**Volume** 0.22 mc

**Package** 1

	<b>A</b> (cm) (inch)	<b>B</b> (cm) (inch)	<b>C</b> (cm) (inch)	
<b>H65</b> (cm) (inch)	76 29.9	44 17.3	49 19.3	65 25.6
<b>H75</b> (cm) (inch)	86 33.9	44 17.3	49 19.3	75 29.5