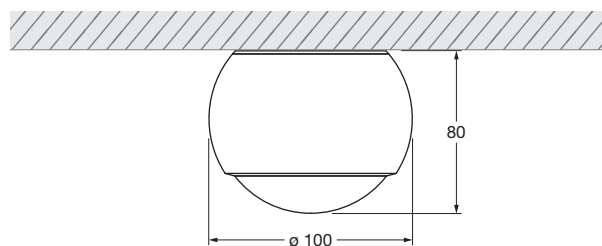
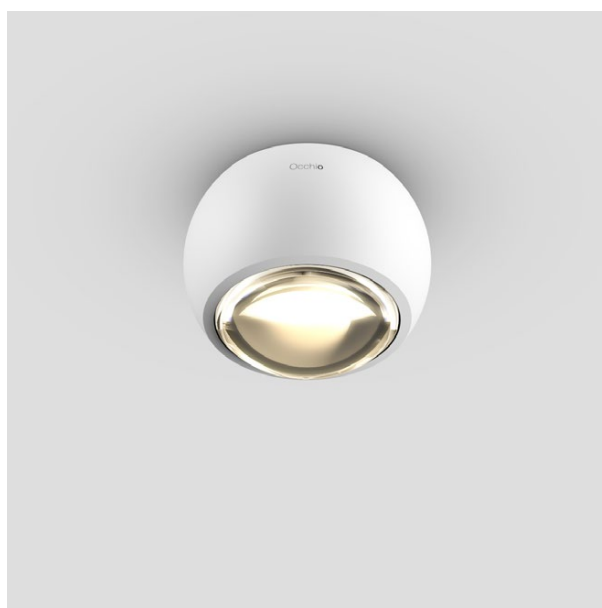


## io alto v VOLT Datasheet

LED ceiling spotlight as a downlight with spherical head and lens optics. Version for mounting on plaster surfaces; connection to 230V AC/50Hz mains voltage; dimmable via trailing-edge phase-cut dimmer\*.

Lighting effect through optional inserts can be changed at any time using a simple mechanism. The VOLT light engine is replaceable.

Other versions: io giro, io giro doppio (surface-mounted spotlight), io piano v, io piano (recessed spotlight).



Dimensions in mm

**Materials luminaire**  
aluminium chrome-plated, painted or anodised, plastic

**Materials inserts**  
glass, optical plastic

glossy black,  
matt black

**Weight**  
0.65 kg

**Connection**  
operation at 230 V AC/  
50 Hz

**Surface head**  
chrome, gold,  
glossy white,  
matt white,

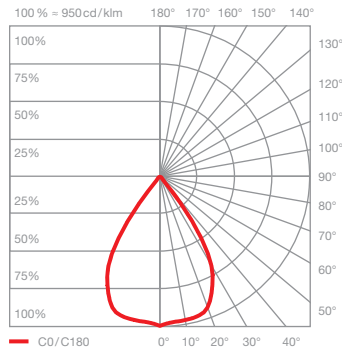
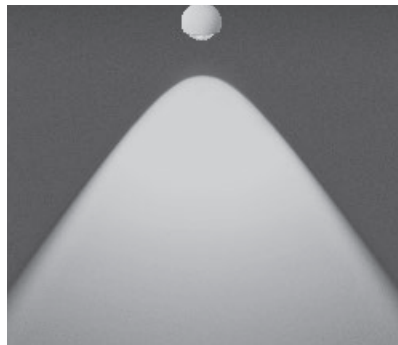
**Dimming**  
trailing-edge phase cut  
dimmer\*

### VOLT light engine

|                                |            |              |                              |            |                            |                 |
|--------------------------------|------------|--------------|------------------------------|------------|----------------------------|-----------------|
| <b>Average lifetime</b>        | <b>t</b>   | > 40.000 hrs | <b>Color rendering index</b> | <b>CRI</b> | perfect color              |                 |
| <b>Energy efficiency class</b> | <b>EEC</b> | A            | <b>Color temperature</b>     | <b>T</b>   | 2700 K                     | Ra 97<br>3000 K |
| <b>Power</b>                   | <b>P</b>   | 13 W         | <b>Recommended use</b>       |            | Residential and commercial |                 |
|                                |            |              | <b>LED luminous flux</b>     | <b>φ</b>   | 800 lm                     | 800 lm          |

\* For a list of compatible dimmers, see [www.occhio.de/dim\\_en](http://www.occhio.de/dim_en)

## io alto v VOLT io lighting effects

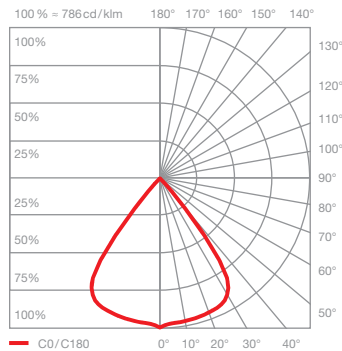
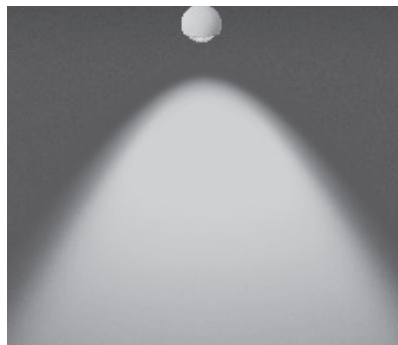


**io C**  
directed light with contour beam angle  
(approx. 80°)\*

inserts: lens

luminous flux: perfect color    13 W    730lm

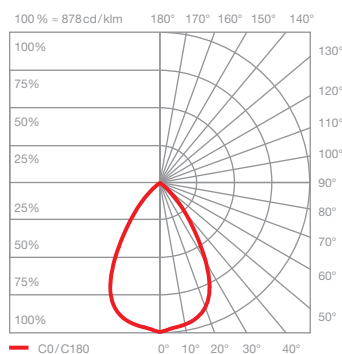
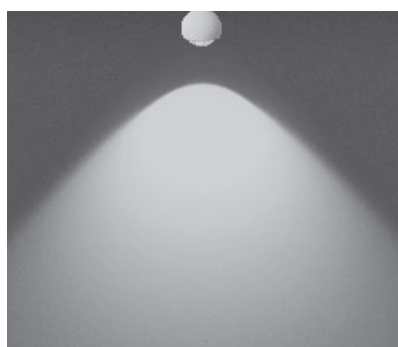
\*without aperture



**io C with soft edge glass**  
directed light with soft contour beam angle  
(approx. 80°)

inserts: lens  
soft edge glass

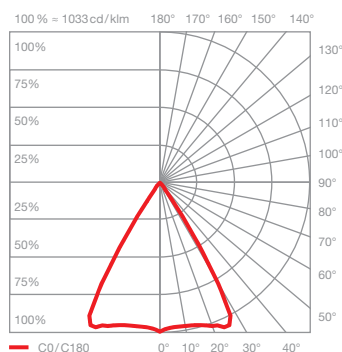
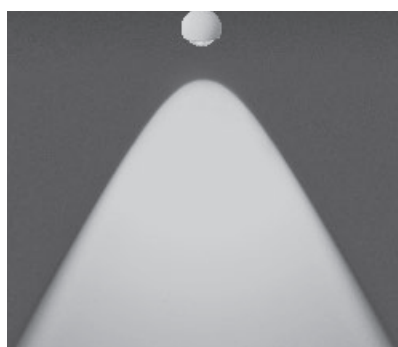
luminous flux: perfect color    13 W    680lm



**io C with satinised glass**  
directed light with soft contour beam angle  
(approx. 100°)

inserts: lens  
satinised glass

luminous flux: perfect color    13 W    550lm



**io C with fresnel lens**  
bundled light  
beam angle approx. 60°

inserts: lens  
fresnel lens

luminous flux: perfect color    13 W    650lm