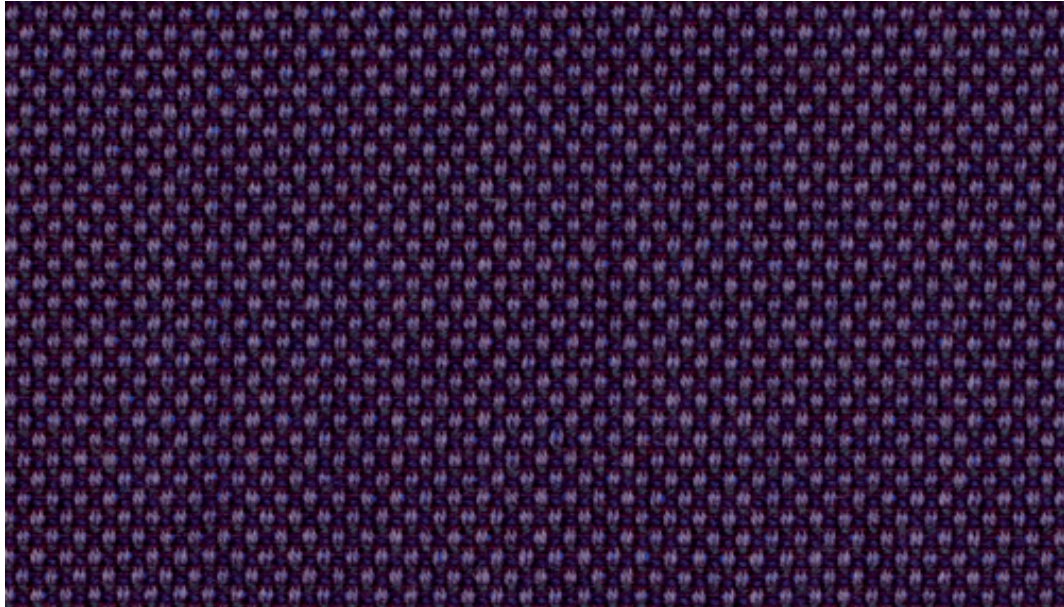


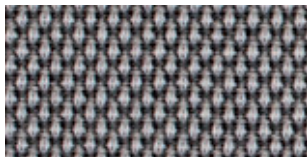
# BREEZE FUSION™

---

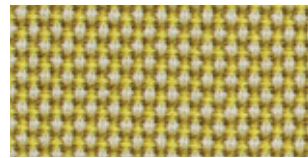
by Gabriel



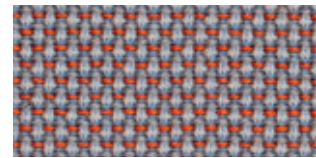
4502



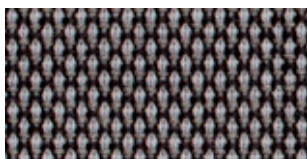
4003



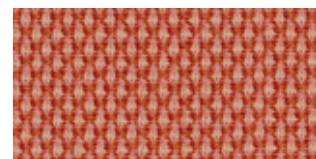
4202



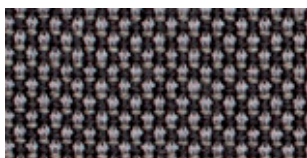
4301



4101



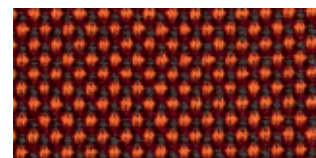
4303



4103



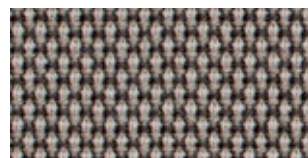
4104



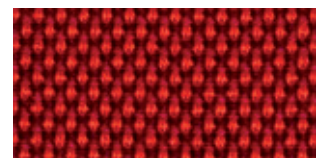
4302



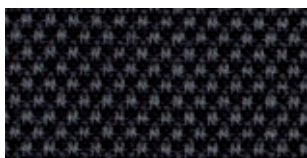
4001



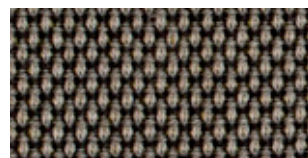
4102



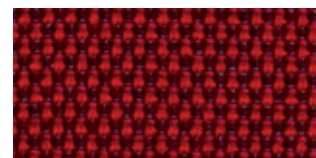
4401



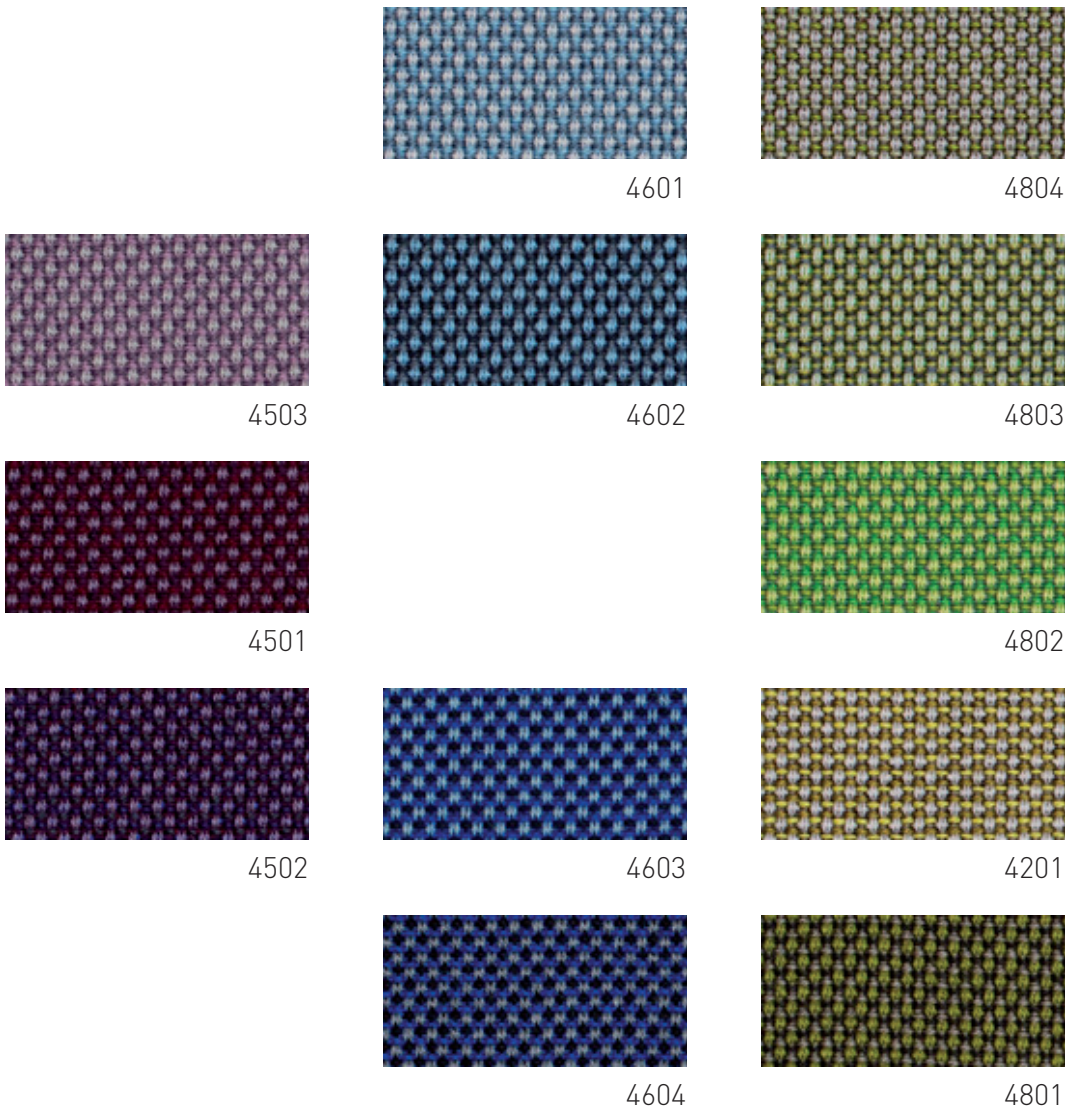
4004



4002



4402



Please be aware that the PDF colour shades can appear different from the real fabric colours.

# BREEZE FUSION™

Design no.	2426	
Fields of application	contract furnishing	
Material	wools of New Zealand · polyamide	88% · 12%
Weight	590 g/lm · (19.03 oz/lin.yd.)	
Width	140 cm · (55")	
Abrasion resistance	rubs · EN ISO 12947-2 (Martindale)	100,000
Pilling	scale 1-5, max 5 · EN ISO 12945-2	4-5
Colour fastness to light	scale 1-8, max 8 · EN ISO 105 - B02	5-7
Colour fastness to rubbing	scale 1-5, max 5 · EN ISO 105x12 (wet/dry)	4-5
Cleaning	dry cleaning	P(S)
Flammability	EN 1021 1&2 · BS 5852 0&1 · Calif. Tech. Bull. 117,E Will also pass other flammability standards. Flame retardant performance is dependent upon the foam used.	
US ACT	<ul style="list-style-type: none"> <li>☀ AATCC 16 Lightfastness</li> <li>☕ AATCC 8 or 116 wet/dry crocking</li> <li>🔥 California Bulletin CAL 117-E Class 1</li> <li>📐 ASTM D4966-02 Martindale Abrasion (Heavy Duty Upholstery).</li> <li>★ ASTM D3511 Pilling</li> </ul>	<ul style="list-style-type: none"> <li>pass</li> <li>pass</li> <li>pass</li> <li>pass</li> <li>pass</li> </ul>
Design/Colours	Cenk Kivrikoglu	
Subject to changes and colour differences		

