

PRODUCT SHEET
— FRANCIS — Wall mirrors —

CONSTANCE GUISET

PETITE FRITURE

CONSTANCE GUISSET



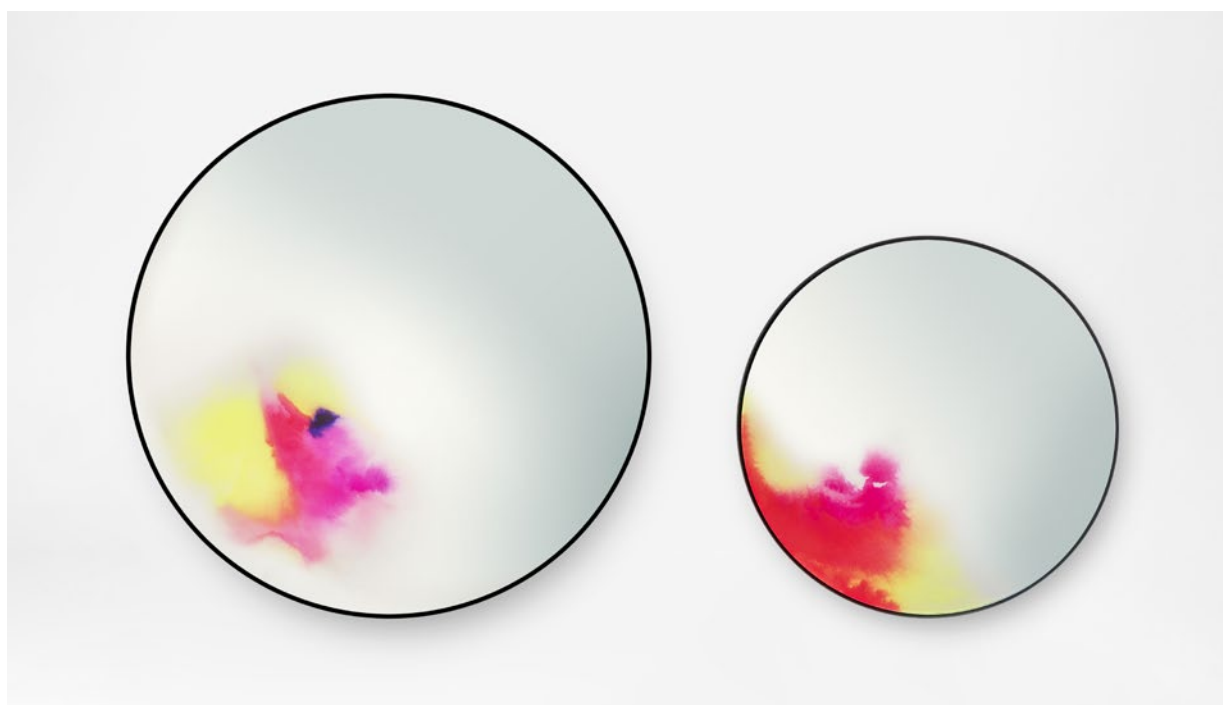
Born in 1976, Constance Guisset lives and works in Paris. Constance Guisset is a French designer with an original story. After studying economics and business at ESSEC and IEP in Paris, followed by a year in the parliament in Tokyo she chose to focus on design. In 2007 she graduated from ENSCI - Les Ateliers and founded her studio. She quickly earned recognition through winning prizes such as the Grand Prix du Design de la ville de Paris in 2008, the public prize at the Design Parade in Villa Noailles 2009, and finally in 2010 both the designer of the year at Maison et Objet, and the Audi Talent Awards. Her different research paths have led her to work with

Petite Friture, Fontana Arte and Molteni amongst others for product design. In addition she has worked with Angelin Preljocaj, Established & Sons and Galeries Lafayette notably working with the latter on scenography, and has worked with video for Le Musée des Arts Décoratifs and the design Biennale in Saint-Étienne.

« My research finds multiple applications in scenography, object design and videos. I attach myself to creating light, animated objects in which the elegant fluidity creates surprise and evasion through dreaming. »

FRANCIS
MIRRORS
CONSTANCE GUISSET

Edition 2011
Award : WALLPAPER DESIGN AWARD 2012



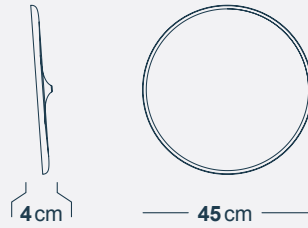
FRANCIS...
ACCORDING TO ITS DESIGNER :

« The FRANCIS mirror came from an experimentation: pigments vanishing on water. The result is a bright oxidation. Make up palette or ageing mirror? »

The wall mirror FRANCIS evolved from an experience with pigmentation. The shifting colours on the periphery suggest the oxidation of antique mirrors or hues on a makeup palette. This observational design, with vivid and deep colours, is reflected inside the surface of each mirror by digital printing. The back of the mirror, slightly convex, is suspended through the centre, which allows the mirror to fall forward such as with venetian mirrors.

DIMENSIONS & WEIGHTS

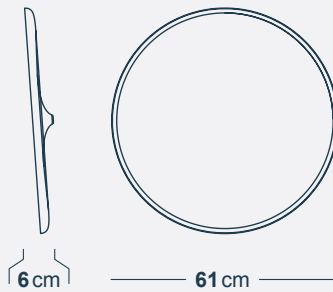
SMALL



Ø: 45 cm ; W: 4 cm
W: 3 kg

Packaging: 50 x 50 x 7,5 cm

LARGE



Ø: 61 cm ; W: 6 cm
W: 7 kg

Packaging: 68 x 68 x 7,5 cm

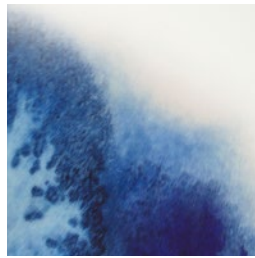
TECHNICAL SPECIFICATIONS

- Environment : indoor
- Mirror inserted in an aluminium back
- Central attach: black cord
- Made in Europe (France)

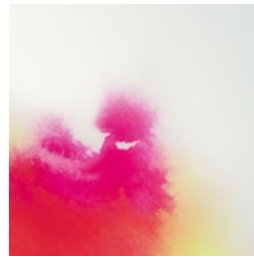
COLOURS & MATERIALS

- Mirror, aluminum, grained epoxy paint

SMALL

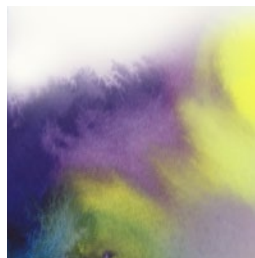


BLUE
REF.
D0100203

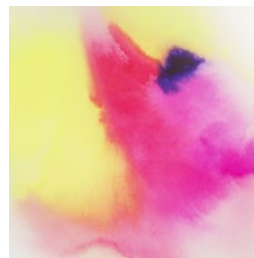


PINK
REF.
D0100204

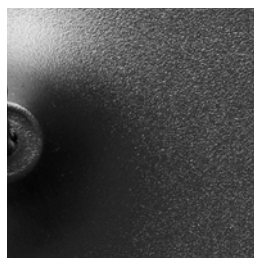
LARGE



BLUE
REF.
D0100101



PINK
REF.
D0100102



BLACK (BACK)
RAL 9005

· | **CONTACT** | ·

PETITE FRITURE

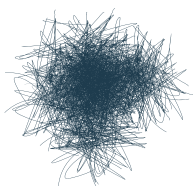
Showroom

83 boulevard Richard Lenoir, 75011 - Paris

T +33 (0)1 44 54 13 95

F +33 (0)1 44 54 02 19

petitefriture.com



**PETITE
FRITURE**
ÉDITEUR DE DESIGN