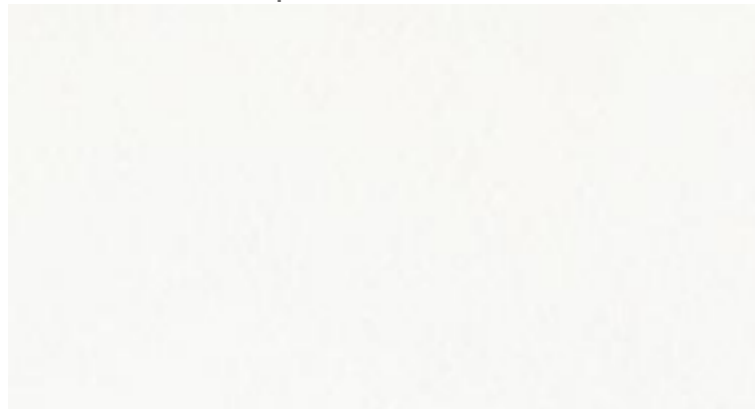


MY
home collection

සමුදාය
සමුදාය

CAT. K : Pelle | Leather



CAT.-K-PELLE-BIANCO-2.jpg



CAT.-K-PELLE-CREMA-80.jpg



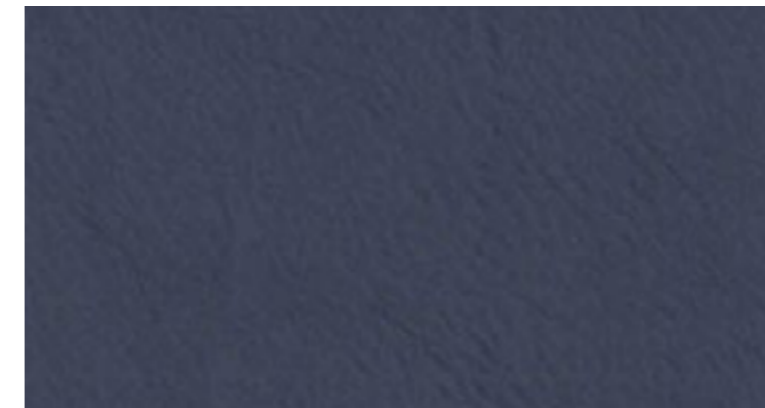
CAT.-K-PELLE-BEIGE-81.jpg



CAT.-K-PELLE-ROSSO-8.jpg



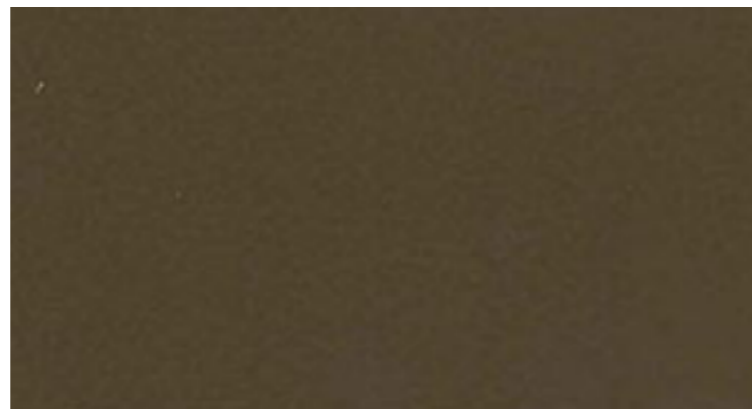
CAT.-K-PELLE-BORDEAUX-24.jpg



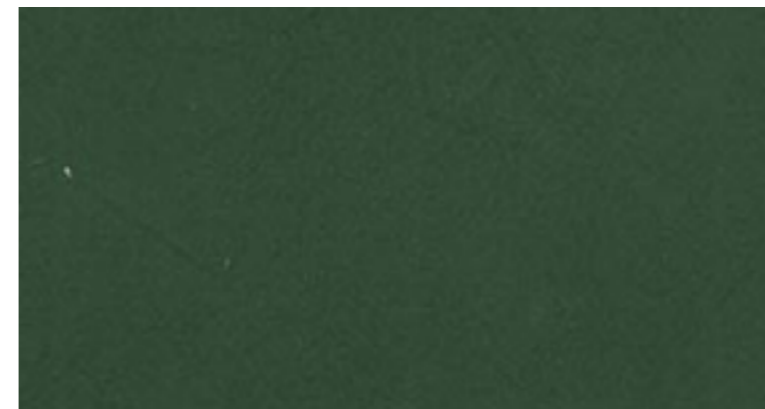
CAT.-K-PELLE-BLUE-21.jpg



CAT.-K-PELLE-GRIGIO-4.jpg



CAT.-K-PELLE-MARRONE-988.jpg



CAT.-K-PELLE-VERDE-SCURO-12.jpg

CAT. K : Pelle | Leather



CAT.-K-PELLE-TESTA-DI-MORO-23.jpg



CAT.-K-PELLE-NERO-1.jpg

CAT. VIP : Pelle | Leather

Pelle con tatto eccellente. - Leather with excellent touch.



CAT.-VIP-PELLE-LINO-179.jpg



CAT.-VIP-PELLE-SABBIA-123.jpg



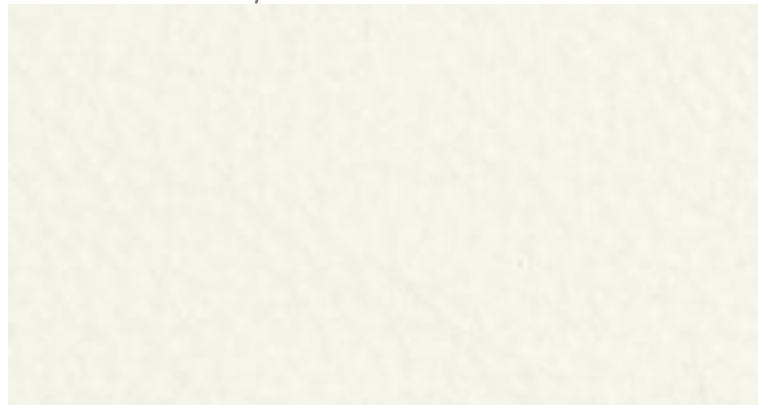
CAT.-VIP-PELLE-CAMOSCIO-207.jpg



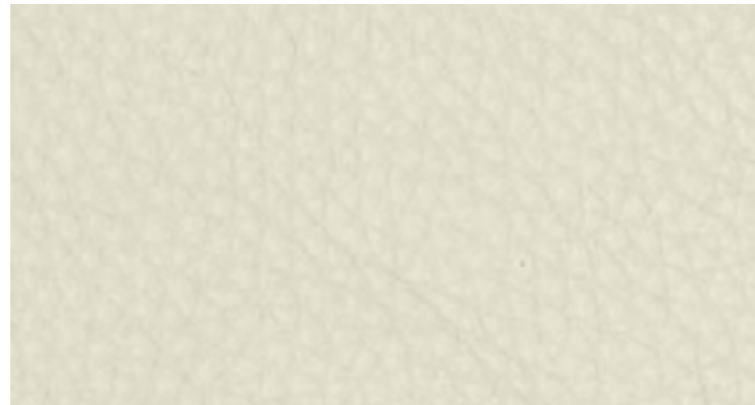
CAT.-VIP-PELLE-MARMOTTA-218.jpg

CAT. TOP : PIUMONE - Pelle | Leather

Pelle dall'elevato spessore con un tatto e una mano eccellenti. The softness of the leather but much thicker and stronger with an excellent touch and texture.



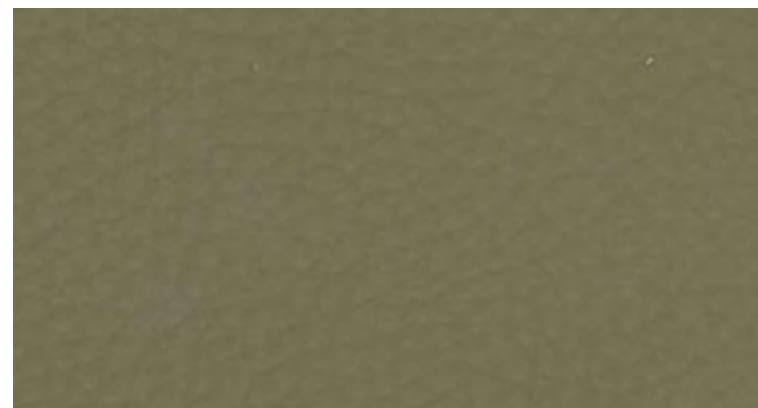
CAT.-TOP-PELLE-PIUMONE-BIANCO-705.jpg



CAT.-TOP-PELLE-PIUMONE-LATTE-709.jpg



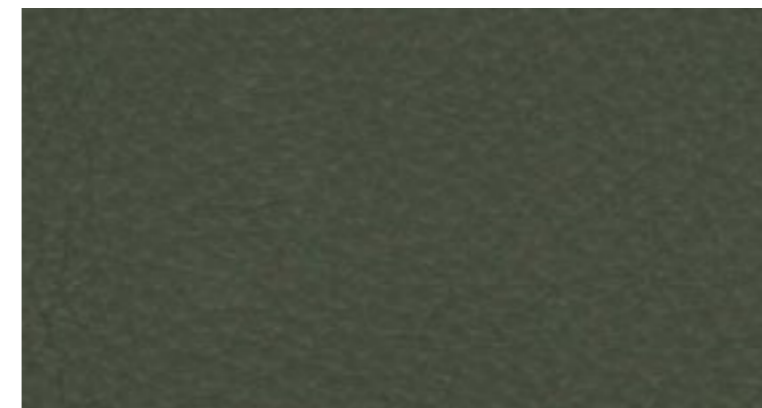
CAT.-TOP-PELLE-PIUMONE-TORTORA-707.jpg



CAT.-TOP-PELLE-PIUMONE-MASTICE-708.jpg



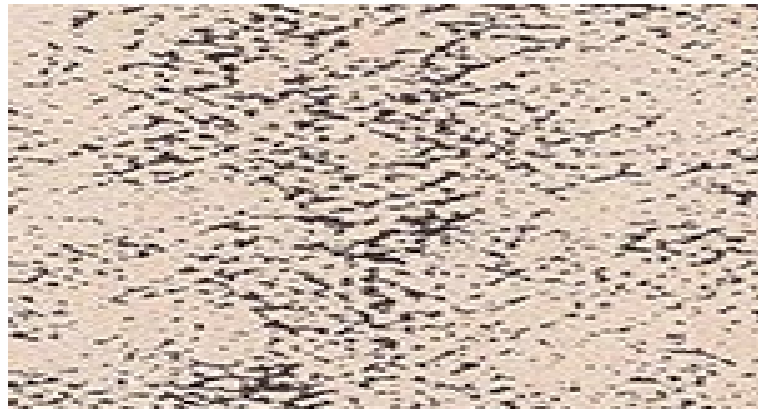
CAT.-VIP-PELLE-CAMOSCIO-207.jpg



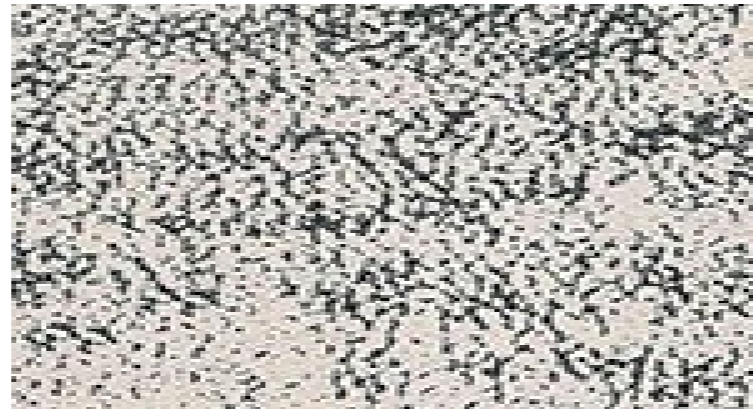
CAT.-TOP-PELLE-PIUMONE-ELEFANTE-706.jpg

CAT. GOLD : Pelle | Leather

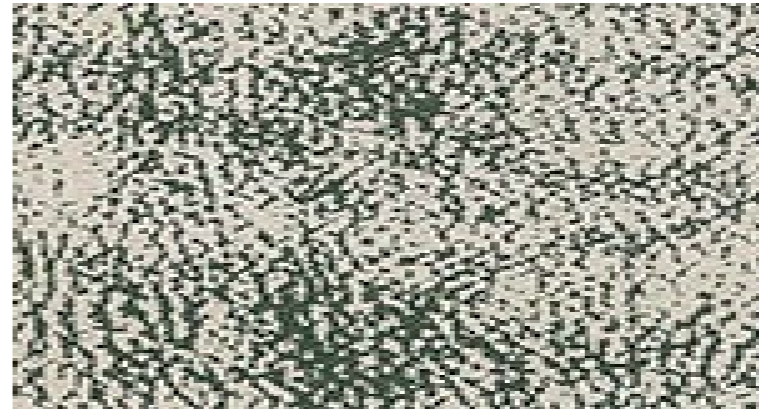
Pelle con effetto "vintage". - A "vintage" effect.



CAT.-GOLD-PIXEL-TANGANICA.jpg



CAT.-GOLD-PIXEL-ANTRACITE.jpg



CAT.-GOLD-PIXEL GUACAMOLE.jpg



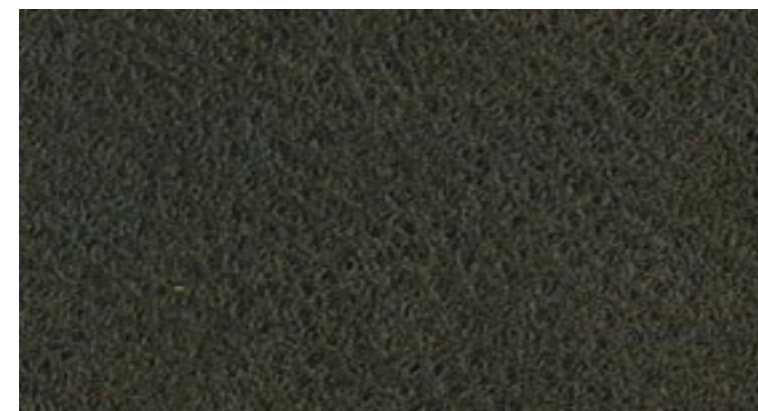
CAT.-GOLD-PELLE-CASHMIRE-AMBER.jpg



CAT.-GOLD-PELLE-CASHMIRE-ASH.jpg



CAT.-GOLD-PELLE-CASHMIRE-BRICK.jpg



CAT.-GOLD-PELLE-CASHMIRE-EBONY.jpg

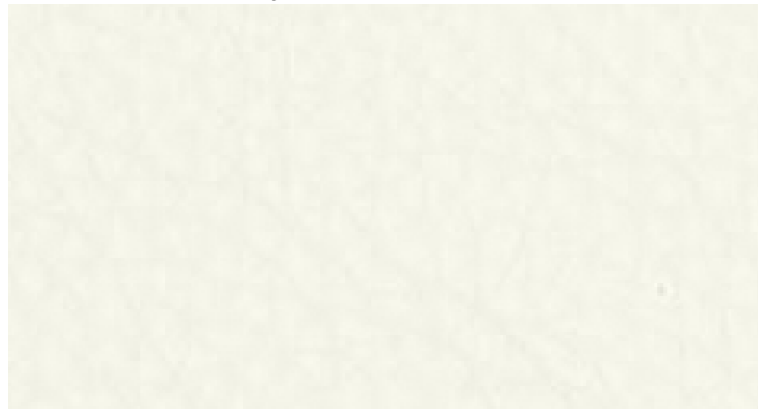


CAT.-GOLD-PELLE-CASHMIRE-GREEN.jpg



CAT.-GOLD-PELLE-CASHMIRE-SLATE.jpg

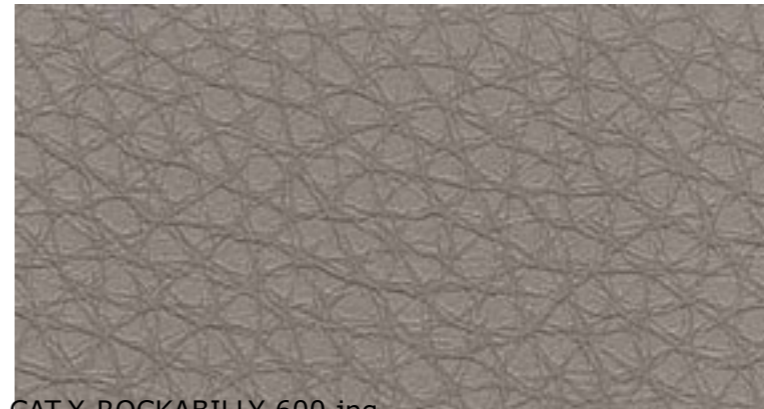
CAT. X : Fintapelle | Imitation leather



CAT.X-ROCKABILLY-111.jpg



CAT.X-ROCKABILLY-601.jpg



CAT.X-ROCKABILLY-600.jpg



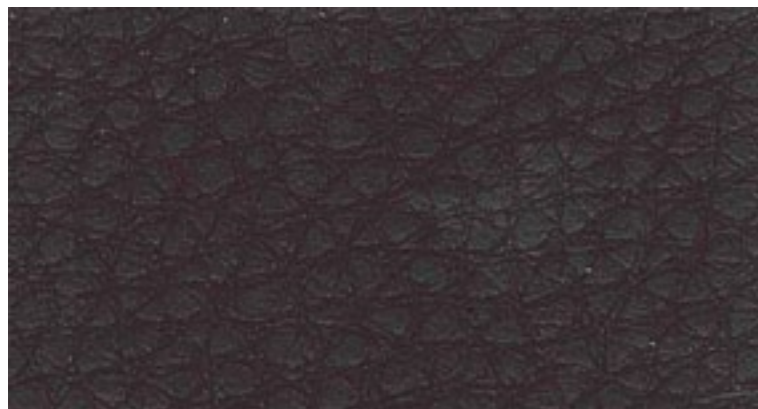
CAT.X-ROCKABILLY-304.jpg



CAT.X-ROCKABILLY-705.jpg



CAT.X-ROCKABILLY-405.jpg



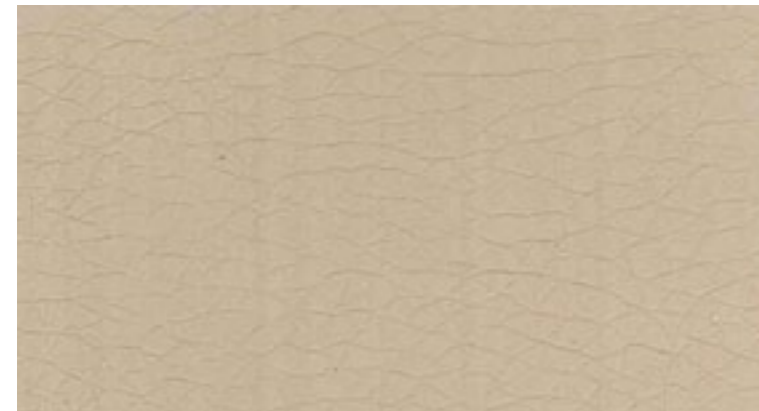
CAT.X-ROCKABILLY-200.jpg

CAT. Y : Fintapelle | Imitation leather

CAT.Y-CALLIOPE-111.jpg



CAT.Y-AUREA-MOOD-03.jpg



CAT.Y-MISTRAL-1167.jpg



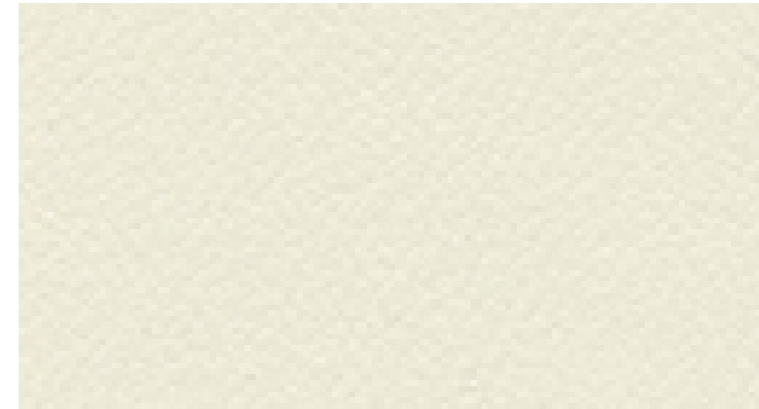
CAT.Y-AUREA-MOOD-01.jpg



CAT.Y-AUREA-MOOD-04.jpg



CAT.Y-CALLIOPE-805.jpg



CAT.Y-AUREA-MOOD-02.jpg



CAT.Y-CALLIOPE-310.jpg

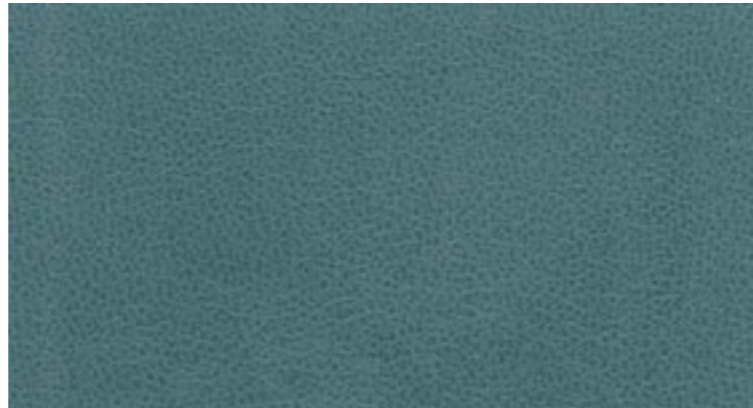


CAT.Y-AUREA-MOOD-10.jpg

CAT. Y : Fintapelle | Imitation leather



CAT.Y-AUREA-MOOD-05.jpg



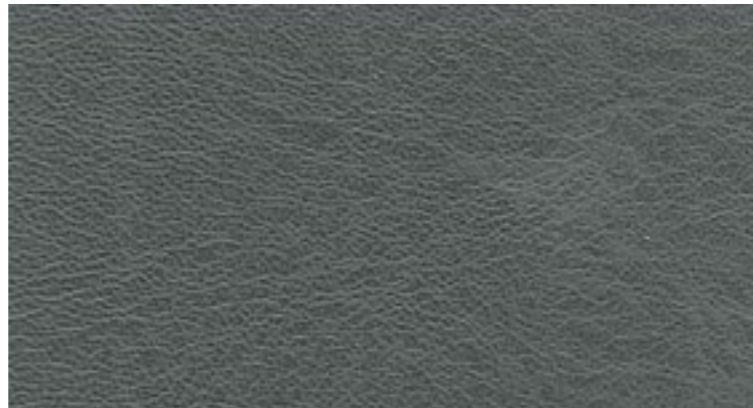
CAT.Y-CALLIOPE-700.jpg



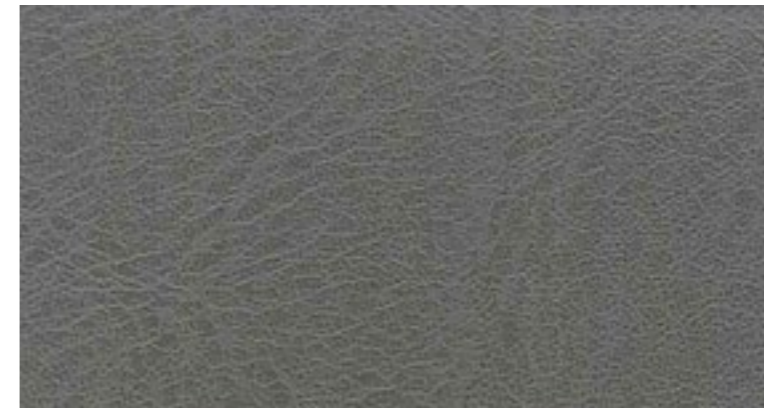
CAT.Y-CALLIOPE-401.jpg



CAT.Y-CALLIOPE-706.jpg



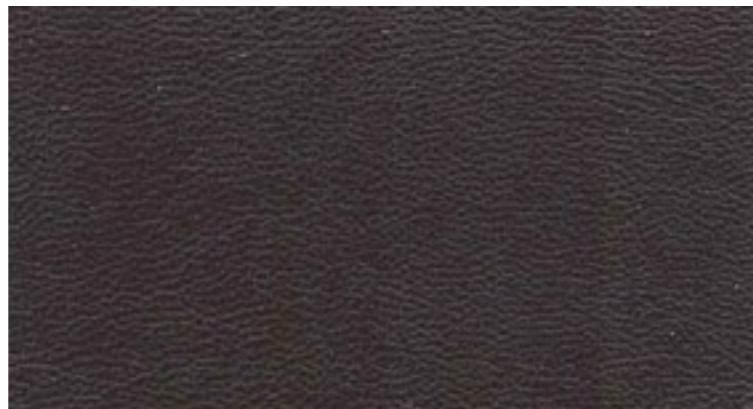
CAT.Y-CALLIOPE-601.jpg



CAT.Y-CALLIOPE-603.jpg



CAT.Y-CALLIOPE-405.jpg



CAT.Y-CALLIOPE-200.jpg

CAT. S : Velluti | Velvet



CAT.S-NOBILIS-1340-01.jpg



CAT.S-NOBILIS-1340-02.jpg



CAT.S-NOBILIS-1340-05.jpg



CAT.S-NOBILIS-1340-07.jpg



CAT.S-NOBILIS-1340-10.jpg



CAT.S-NOBILIS-1340-12.jpg



CAT.S-NOBILIS-1340-14.jpg



CAT.S-NOBILIS-1340-20.jpg



CAT.S-NOBILIS-1340-21.jpg



CAT.S-NOBILIS-1340-25.jpg

01 LIGHT - Tessuti | Fabrics



CAT.M-CLOU-1345-01.jpg



CAT.M-CLOU-1345-02.jpg



CAT.M-CLOU-1345-03.jpg



CAT.M-PLANET-501.jpg



CAT.M-PLANET-502.jpg



CAT.S-DENIM-100-05.jpg



CAT.X-GOCART-101.jpg



CAT.X-L1323-01.jpg



CAT.X-L1323-02.jpg



CAT.X-RALLY-111.jpg



CAT.Y-BASENTO-14835-04.jpg



CAT.Y-DENIM-200-05.jpg

02 GREIGE - Tessuti | Fabrics



CAT.M-CLOU-1345-10.jpg



CAT.M-CLOU-1345-11.jpg



CAT.M-PLANET-504.jpg



CAT.S-DENIM-100-02.jpg



CAT.X-GOKART-603.jpg



CAT.X-L1323-03.jpg



CAT.X-L1323-04.jpg



CAT.X-RALLY-602.jpg



CAT.Y-BASENTO-14835-05.jpg



CAT.Y-BASENTO-14835-06.jpg



CAT.Y-DENIM-200-02.jpg

03 BROWN - Tessuti | Fabrics



CAT.M-CLOU-1345-05.jpg



CAT.M-CLOU-1345-06.jpg



CAT.M-PLANET-506.jpg



CAT.M-PLANET-519.jpg



CAT.X-L1323-28.jpg



CAT.X-RALLY-405.jpg



CAT.Y-BASENTO-14835-08.jpg

04 GREEN - Tessuti | Fabrics



CAT.M-PLANET-523.jpg



CAT.S-DENIM-100-08.jpg



CAT.X-L1323-25.jpg



CAT.Y-BASENTO-14835-13.jpg



CAT.Y-DENIM-200-08.jpg

05 GREY - Tessuti | Fabrics



CAT.M-CLOU-1345-07.jpg



CAT.M-PLANET-515.jpg



CAT.M-PLANET-516.jpg



CAT.S-DENIM-100-04.jpg



CAT.X-GOCART-600.jpg



CAT.X-GOCART-601.jpg



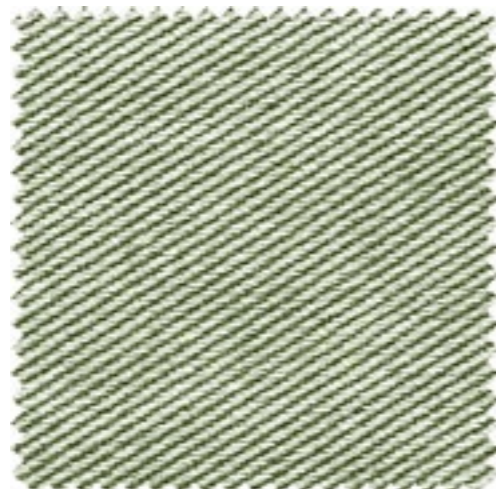
CAT.X-L1323-21.jpg



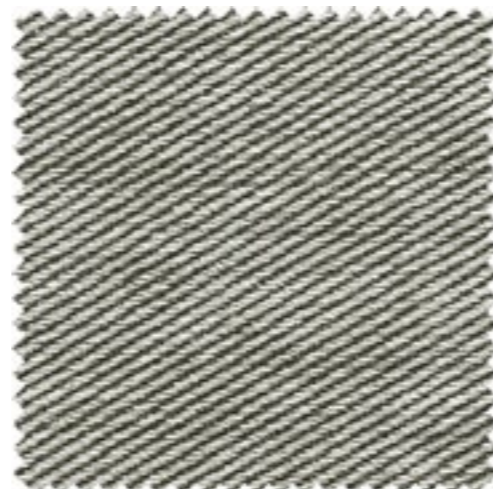
CAT.X-RALLY-600.jpg



CAT.Y-BASENTO-14835-22.jpg



CAT.Y-DENIM-200-04.jpg



CAT.Y-DENIM-200-06.jpg



CAT.X-RALLY-601.jpg



CAT.S-DENIM-100-06.jpg

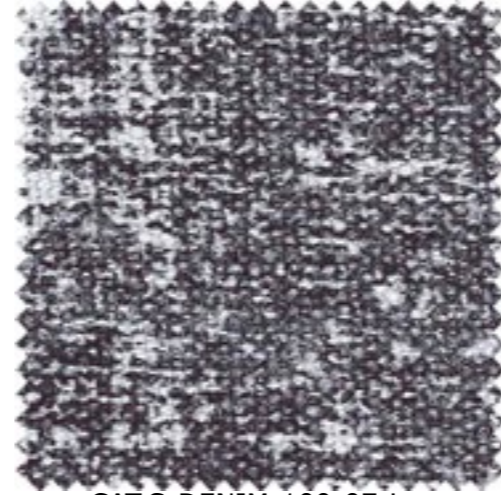
06 BLUE - Tessuti | Fabrics



CAT.M-CLOU-1345-09.jpg



CAT.M-PLANET-518.jpg



CAT.S-DENIM-100-07.jpg



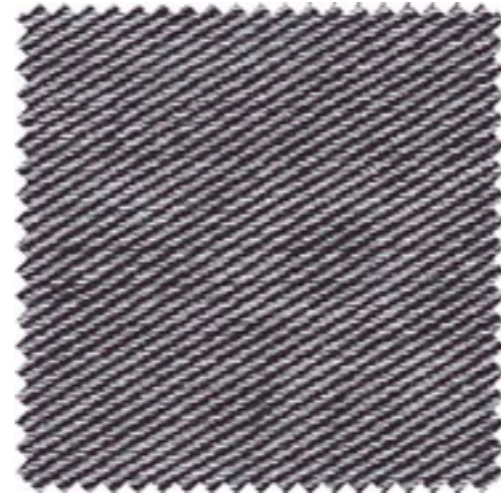
CAT.X-GOKART-705.jpg



CAT.X-L1323-11.jpg



CAT.Y-BASENTO-14835-17.jpg



CAT.Y-DENIM-200-07.jpg

07 COLOURS - Tessuti | Fabrics



CAT.M-PLANET-513.jpg



CAT.M-PLANET-514.jpg



CAT.X-GOKART-305.jpg



CAT.X-RALLY-308.jpg

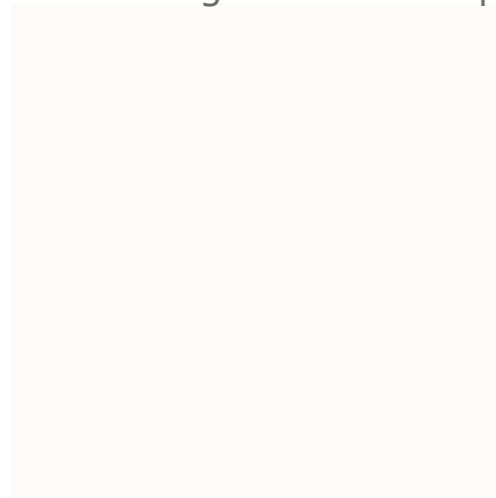


CAT.X-RALLY-711.jpg

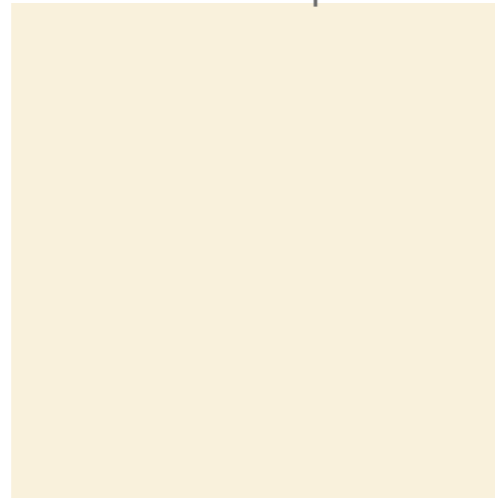


CAT.X-RALLY-811.jpg

Finiture legno & metallo | Steel & wood lacquers



Ral9016_bianco.jpg



Ral1013_Panna.jpg



Ral1021_Zolfo.jpg



Ral2004_Zucca.jpg



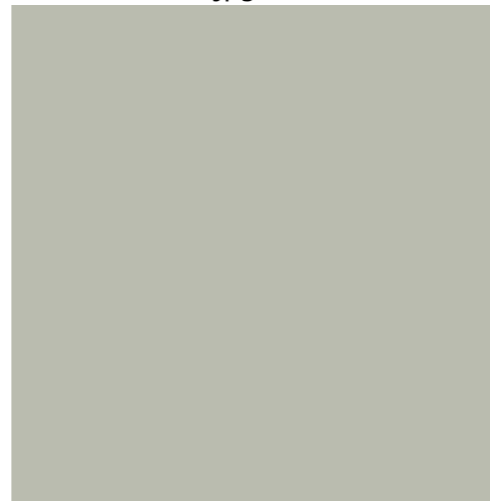
Ral3020_Ciliegia.jpg



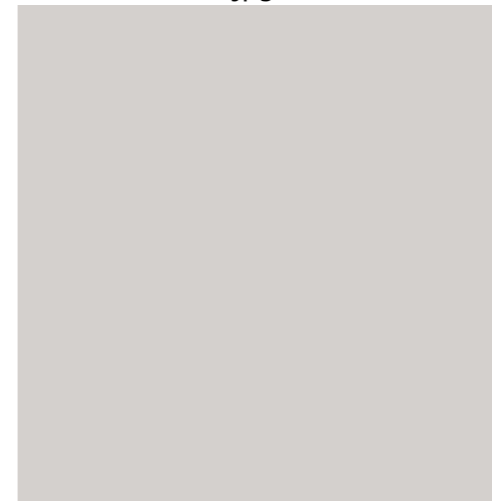
Ral5000_Petrolio.jpg



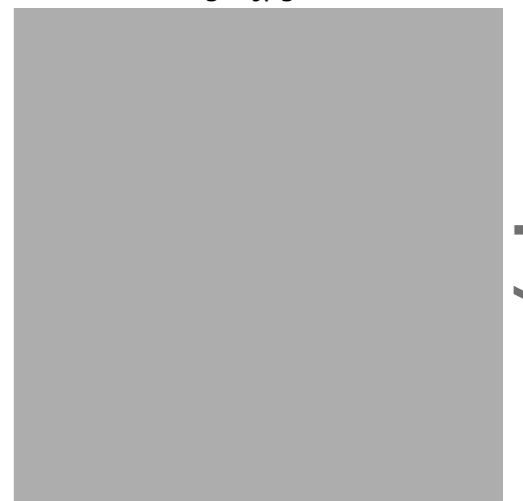
Ral6025_Muschio.jpg



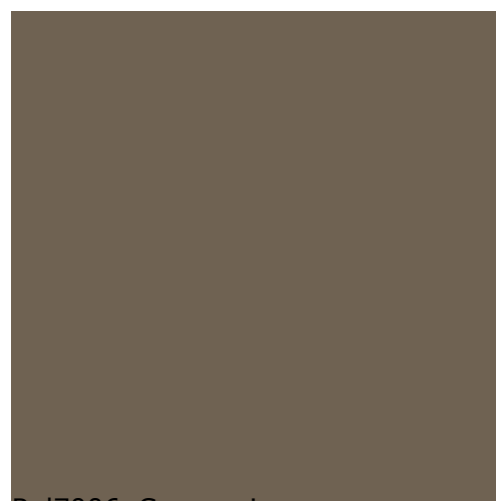
Ral7038_Corda.jpg



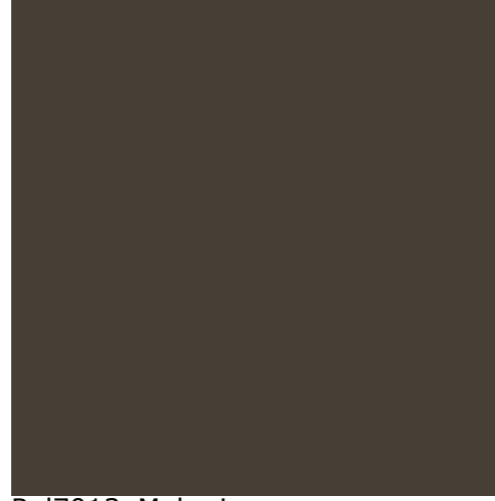
Ral7047_Ghiaccio.jpg



Ral7040_Pioggia.jpg



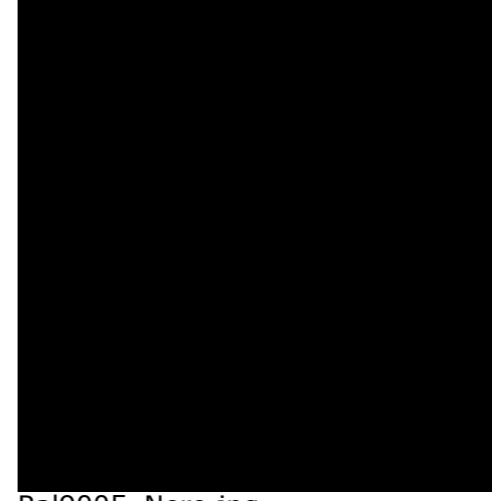
Ral7006_Canapa.jpg



Ral7013_Moka.jpg



Ral7015_Grafite.jpg



Ral9005_Nero.jpg

Essenze | Wood



Frassino-bianco.jpg



Frassino-nero.jpg

Corda | Cord



BIANCO.jpg



CREMA.jpg



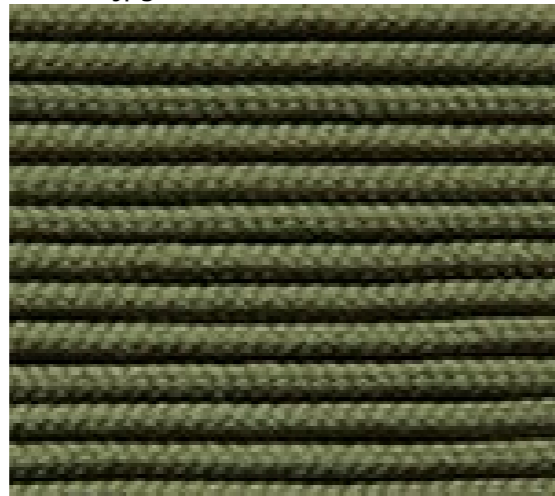
ARANCIO.jpg



GRIGIO.jpg



BLU.jpg



MUSCHIO.jpg

ARTICOLO	COMPOSIZIONE	MANUTENZIONE
Art. L1323	100% CO	
Art. 1340 Nobilis	100% CO	
Art. Clou	52% LI 48% VI	
Art. Denim 100	100% LI	
Art. Denim 200	100% CO	
Art. Planet	100% LI	
Art. Basento	38% PC 36% VI 15% CO 9% LI 2% AF	
Art. Gokart	95% PL 5% PA Idrorepellente / Irrestringibile water repellent / no shrink	
Art. Aurea mood	72% PVC 25% CO 3% PU	
Pelle / Leather	Pellami naturali di alto pregio e morbidissimi al tatto. Pulire con acqua e sapone neutro e periodicamente con crema nutriente stesa in modo uniforme con panno di cotone. Eventuali piccole imperfezioni, cicatrici o lievi variazioni di tonalità di colore sono da considerarsi caratteristiche di genuinità. High quality, genuine, smooth and soft leather. Clean with water and neutral soap and apply some nourishing cream evenly over the entire surface of the leather with a cotton cloth. Eventual little imperfections, scars in surface, grain more or less evident and slight differences in tonality of colour are to be considered as characteristics of natural and genuine leather.	

My
home collection

My home collection s.r.l.s.
Zona Industriale C.P. 22
50028 Sambuca Val di Pesa -FI- Italy
Tel. +39 055 8070202
Fax +39 055 8070185
e-mail info@myhomecollection.it
www.myhomecollection.it