



Marcopolo

Extendable table with four legs base in lacquered steel. Top and extensions in glass or crystalceramic.



Finishing and Materials

Base



White Steel



Black Seel



Sand Steel

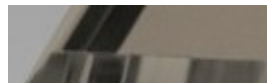


Grafite Steel



Brown Steel

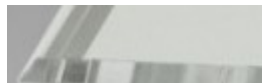
Top



Matt Sand Antiscratch Glass



Matt Graphite Antiscratch Glass



Extra Clear Matt White Antiscratch Glass



Charcoal Savoia Ceramic

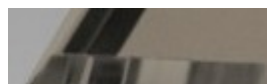


Ceramic with effect calacatta marble
1 color



Crystalceramic Glossy Black Greek Marble

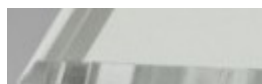
Extensions



Matt Sand Antiscratch Glass



Matt Graphite Antiscratch Glass



Extra Clear Matt White Antiscratch Glass



Charcoal Savoia Ceramic

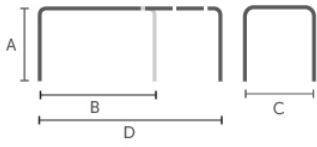


Ceramic with effect calacatta marble
1 color



Crystalceramic Glossy Black Greek Marble

Dimensions



Volumetric Details

Weight 116

Volume 0.65 mc

Package 4

Dimension	A	B	C	D
	(cm)	(cm)	(cm)	(cm)
	(inch)	(inch)	(inch)	(inch)
200x100	76	200	100	290
	(29.9)	(78.7)	(39.4)	(114.2)
140x140	76	140	140	230
	(29.9)	(55.1)	(55.1)	(90.6)

Gallery

